

Installation of Field Feature Bill of Material (FFBM)

PN 10K8798

Install Network Node Control Point (NNP-A) Type 5 (Based on 6578) Feature Code 5425 on IBM 3746-900

Written by: C. Vallee
Modified by: J. Maher
Checked by: J. Combes
Approved by: D. Esteve
Reviewed by: A. Bowen

3746 FFBM	PN 42L2444 1 of 10	See EC History	EC F70078 22 APR 1999	EC F70110 20 JAN 2000	EC F64810E 27 MAR 2000	EC H10024 08 MAR 2001
--------------	-----------------------	-------------------	--------------------------	--------------------------	---------------------------	--------------------------

Installation Instructions

3746
FFBM

PN 42L2444 2 of 10	See EC History	EC F70078 22 APR 1999	EC F70110 20 JAN 2000	EC F64810E 27 MAR 2000	EC H10024 08 MAR 2001
-----------------------	-------------------	--------------------------	--------------------------	---------------------------	--------------------------

Before Installation (Steps 1-8)

1.0 Machines Affected

3746 Model 900 with service processor type: 6578-RAU, 6563-65U, 6275-56U, 6275-83U, 7585-P02, or 3172-P90.

This feature should only be applied on the machine serial number for which it is specified.

2.0 Related BMs and ECs

2.1 Prerequisites

(Must be installed prior to this installation)

Feature	Title
5425	Service Processor type 6578-RAU
5424	Service Processor type 6563-65U
5053	Service Processor type 6275-56U or 6275-83U or
5052	Service Processor type 7585-P02 or
5021	Service Processor type 3172-P90

EC	Title
H10000A	Licensed Internal Code (Minimum level)

Checkpoint: Check that the TSP EC Level is H10004.009 or higher.

Note: Refer to the *SPIM* or the *Service User's Guide* shipped with the service processor, verify that the code is at EC **H10000A** or above.

Use the procedure **Displaying the EC Level of the Code installed on the hard disk**. If the EC of the code installed is prior to H10000A, use the installation instructions to install the new level of code shipped.

2.2 Concurrent ECs

(Must be installed together)

None.

3746 FFBM	PN 42L2444 3 of 10	See EC History	EC F70078 22 APR 1999	EC F70110 20 JAN 2000	EC F64810E 27 MAR 2000	EC H10024 08 MAR 2001
--------------	-----------------------	-------------------	--------------------------	--------------------------	---------------------------	--------------------------

2.3 Companion ECs

(May be installed together)

None.

3.0 BMs to Be Installed

Feature

B/M	Title
-----	-------

10K8798	Network Node Processor A (NNP-A) Feature Code 5425
---------	--

4.0 Preparation

1. Familiarize yourself with the purpose and details of the installation instruction before negotiating machine time with the customer.
2. Check all items listed on the BMs to determine that all parts have been received. Refer to Chapter 1 in the *Network Node Processor Installation and Maintenance (Based on 6578)*, GY27-0407.
3. Obtain from the customer the **Parameter worksheet**.

5.0 Programming

None.

6.0 Purpose and Description

6.1 Purpose

To support the APPN, X25, IP, ISDN, or MAE functions on 3746-900.

6.2 Description

The installation of the NNP-A is divided into three main steps:

1. Installing the **NNP** code on the **SP** hard disk.
2. Installing the 6578-RAU system unit.
3. Loading the code on the NNP-A.

Note: Steps 2 and 3 are documented in the *Network Node Processor Installation and Maintenance (Based on 6578), GY27-0407*.

7.0 Installation Time

FFBM	Machine Hrs.	System Hrs.	Nbr of CEs
10K8798	1.0	1.0	1

Note: To reduce the MES installation time it is recommended that you load the Network Node Processor Code on the Service Processor and install the system unit at the same time.

8.0 Tools/Material Required

None.

3746 FFBM	PN 42L2444 5 of 10	See EC History	EC F70078 22 APR 1999	EC F70110 20 JAN 2000	EC F64810E 27 MAR 2000	EC H10024 08 MAR 2001
--------------	-----------------------	-------------------	--------------------------	--------------------------	---------------------------	--------------------------

Installation (Steps 9-12)

9.0 Safety

Review the **Safety Notices** and the **Safety Inspection Procedures** located at the beginning of the *IBM 3745 Communication Controller All Models, IBM 3746 Expansion Unit Model 900, IBM 3746 Nways Multiprotocol Controller Model 950 Safety Information*, GA33-0400.

10.0 Details of Installation

10.1 Installing the NNP Code on the SP Hard Disk

Attention: Ensure you are using the correct 3746 serial number before starting this installation.

For any unexpected message or error concerning the service processor, go to the chapter **Problem Determination** of the SPIM shipped with your service processor.

On the Service Processor

- ___ 1. Enter the **Service Processor Maintenance** password (default is IBM 3745).
- ___ 2. Double click on the **Service Processor** object icon.
- ___ 3. Click on **Configuration Management**
- ___ 4. Insert the **Licensed Internal Code CD-ROM** in the CD-ROM drive.

Important Note: To maintain microcode compatibility, use the CD-ROM corresponding to the level checked or installed at the checkpoint indicated at **2.1 Prerequisites** (use the CD-ROM received with this FFBM only if you already use it as the result of the mentioned checkpoint).

- ___ 5. Double click on the **Install 3746 and NNP LIC on SP Hard Disk**, then follow the prompts.
- ___ 6. Wait (Up to 10 minutes) for the message: **Operation successfully completed**.

10.2 Installing and Connecting the NNP

Note: For any unexpected message or error concerning the NNP-A, go to the chapter **Problem Determination** in the *Network Node Processor Installation and Maintenance (Based on 6578)*, GY27-0407.

3746 FFBM	PN 42L2444 6 of 10	See EC History	EC F70078 22 APR 1999	EC F70110 20 JAN 2000	EC F64810E 27 MAR 2000	EC H10024 08 MAR 2001
--------------	-----------------------	-------------------	--------------------------	--------------------------	---------------------------	--------------------------

- ___ 1. Using the *Network Node Processor Installation and Maintenance (Based on 6578)*, GY27-0407, go to Chapter 1 and install the NNP following the instructions to install a NNP-A. When completed go to the next step.
- ___ 2. To allow for the future use of dual level code, restore the non-active version with the same configuration parameters and same level of micro-code as the active version:
 - ___ a. Click on **Operation Management**.
 - ___ b. Double-click on **Manage Disks and Databases**.
 - ___ c. Use the radio button to select **Save databases on diskette** to save configuration parameters. When prompted, insert **Configuration Parameters diskette** (PN 02L3427) into the diskette drive.
 - ___ d. Click on **OK** and wait for completion.
 - ___ e. Remove the diskette, then click on **Cancel** to exit the function.
 - ___ f. Click on **Change Management**.
 - ___ g. Insert the CD-ROM corresponding to the level of microcode checked or installed at the checkpoint indicated in **2.1 Prerequisites**.
 - ___ h. Double-click on **Restore SP (Network Node Processor) μ c on non-active version**, then follow the prompts.
- ___ 3. Ask the customer for a maintenance window on 3746-900 with traffic deactivated.

10.3 Returning the Machine to the Customer

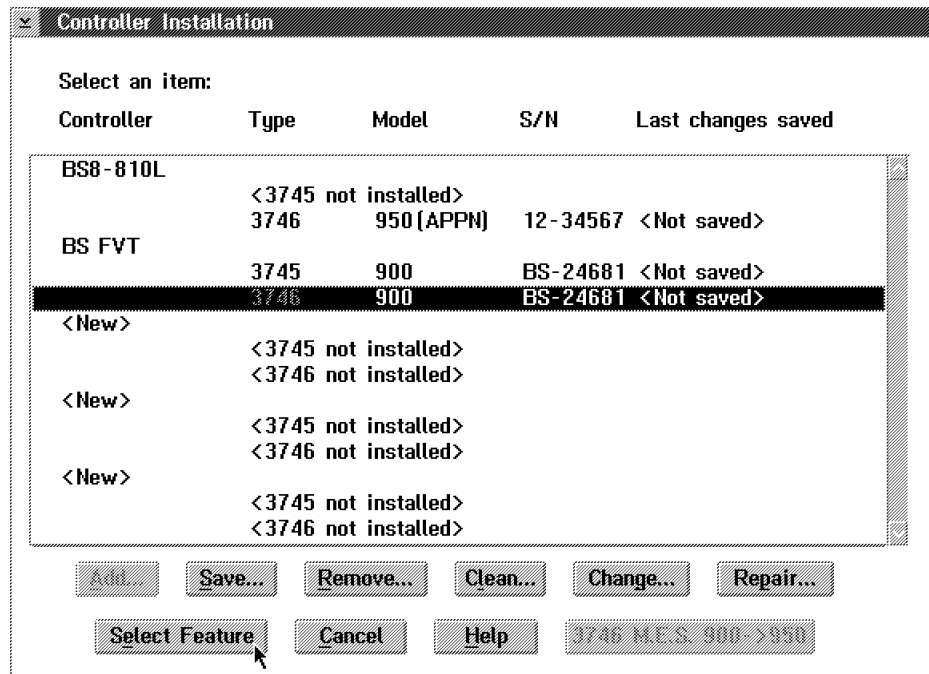
Before you start...

Perform the following procedure to define the network routing protocol to be loaded per processor type. If the customer does not want to specify this information, perform the following steps to log off from the service processor:

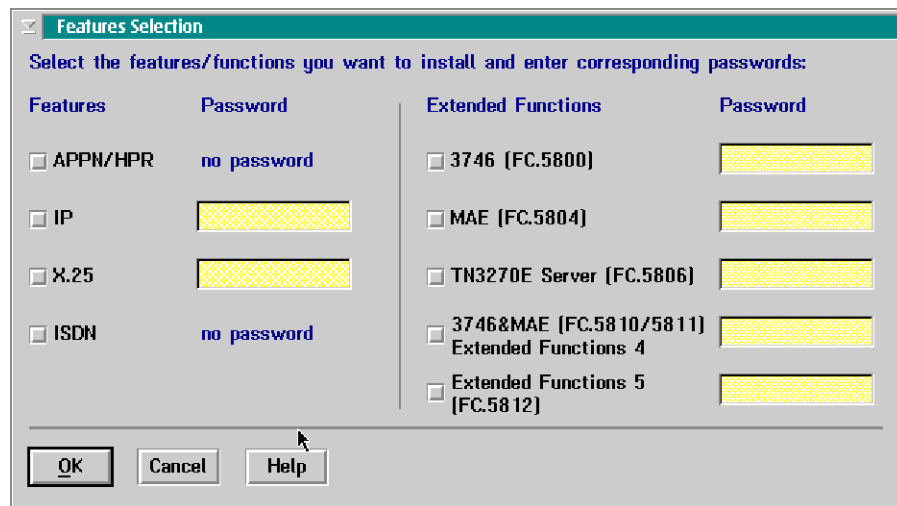
- ___ 1. Perform a general IML.
- ___ 2. On **MOSS-E View** window, click on **Program**.
- ___ 3. Click on **LOG OFF MOSS-E**.

(All protocols will be loaded in all types of processors.)

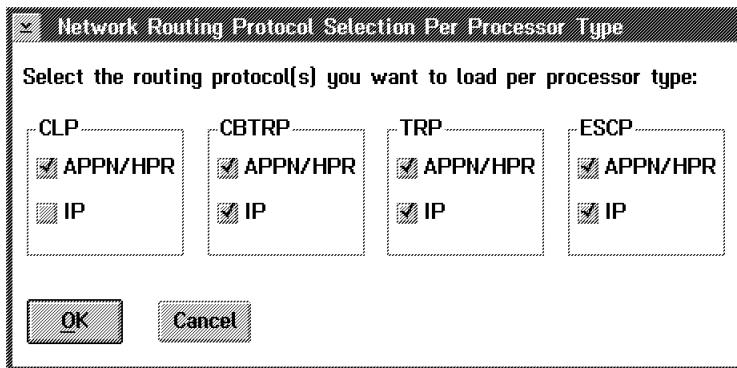
- ___ 1. On the **Service Processor** menu, click on **Configuration Management**, then double click on **Manage 3745/3746 Installation/Removal**
- ___ 2. On the **Controller Installation** menu, select the 3746-9x0 by clicking on the **<3746-9x0>** line, then click on **Select Feature**.



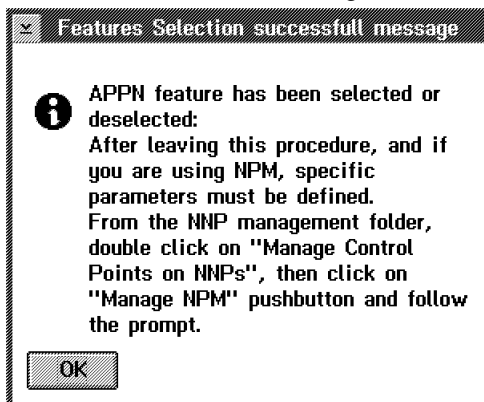
3. On the **Feature Selection** menu, click on **OK**.



4. According to the customer's requirement, On the **Network Routing Protocol Selection Per Processor Type** menu, disable or enable the protocol loaded per processor type, then click on **OK** button.



- ___ 5. Read the information message, then click on **OK** button.



- ___ 6. When completed, click on **OK** and perform a general IML to activate the feature installed.

11.0 Test Procedures

No test required.

12.0 Field Updating

None.

After Installation (Steps 13-16)

13.0 Field Updating

None.

14.0 Publications Update

None.

15.0 Parts Disposition

15.1 Purchased Machines

Refer to the parts ownership matrix to determine the correct owner of removed/unused parts.

- For EMEA/APG/AG Areas, refer to *Hardware and General Service Code Description*.
- For Domestic Areas, return parts to the customer.

16.0 Machine Records

- Install the new **MACHINE HISTORY** supplied.
- Report installation and quality problems using existing procedures.

End of instructions.